

FOR HOB EXTRACTOR

FH, 30m FHR &
2x4.5kg DCP

905
162 sqm

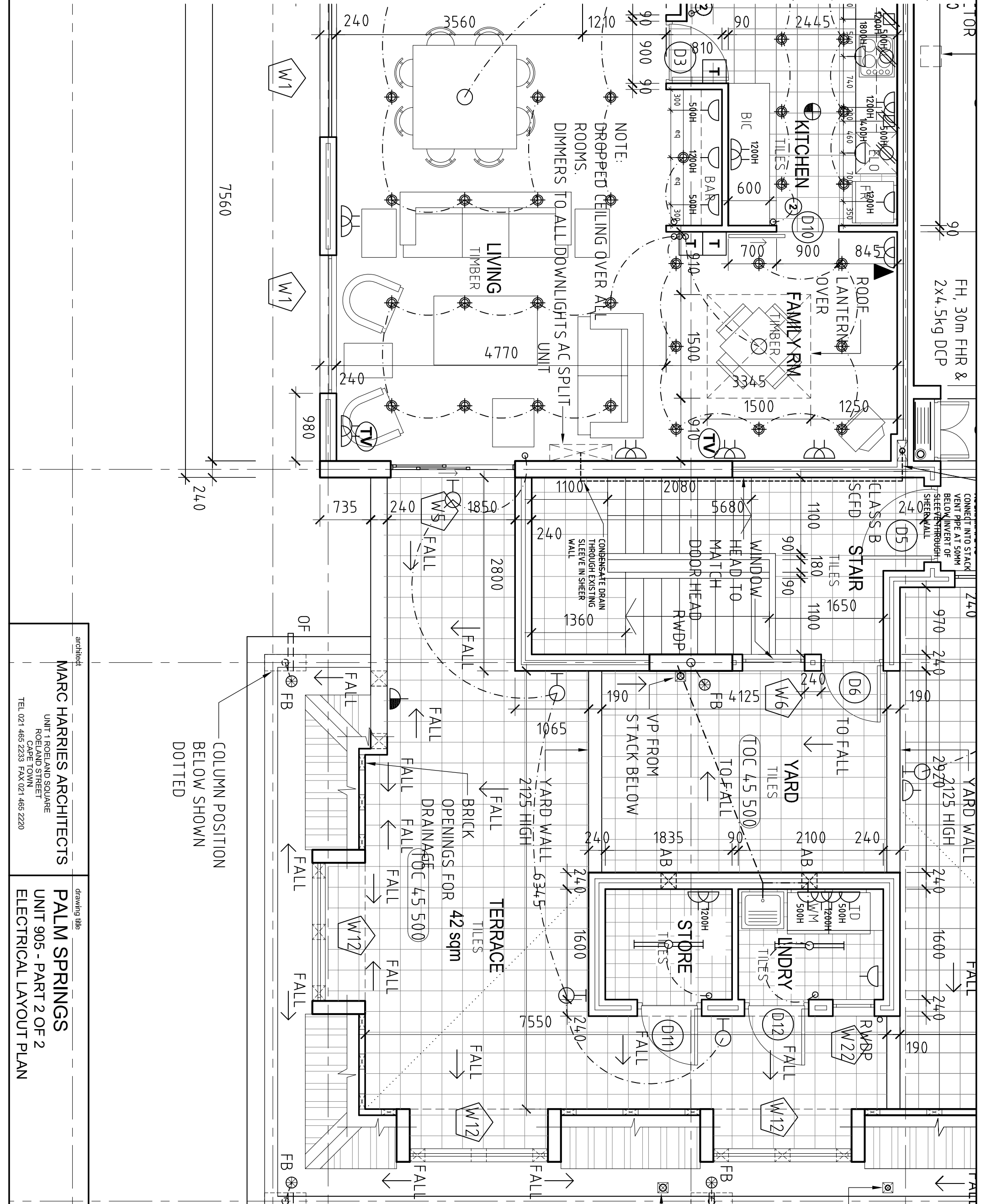
NOTE:
DROPPED CEILING OVER ALL
ROOMS.
DIMMERS TO ALL DOWNLIGHTS AC SPLIT
UNIT

architect
MARC HARRIES ARCHITECTS
UNIT 1 ROELAND SQUARE
ROELAND STREET
CAPE TOWN
TEL: 021 465 2233 FAX: 021 465 2220

drawing title
PALM SPRINGS
UNIT 905 - PART 1 OF 2
ELECTRICAL LAYOUT PLAN

project	scale	date	rev.
OASIS	1:50	29 APRIL 2005	L

rev.	date	description
20.11.2005		CEILING VOID SPACED TO BATHROOMS INCREASED TO ACCOMMODATE MECHANICAL VENTILATION
04.09.2006		AC PIPING NOTES ADDED
19.07.2006		MIRRORS ADDED TO BED 2 UNDERFLOOR HEATING
06.07.2006		ADDED
30.06.2006		SHOWER SEATS ADDED, BIC TO STUDY NOW BY OWNER, DOOR BELL & SOUNDER ADDED, HEATED TOWEL RAIL TO BATH 2, VANITY TO GUEST WC



COLUMN POSITION
BELOW SHOWN
DOTTED

RWH &
RWDP
VP FROM
STACK BELOW

RWH &
RWDP
VP FROM
STACK BELOW

VP FROM
STACK BELOW

rev	date	description
B	03.03.2006	KITCHEN PLUGS DIMENSIONED
C	11.04.2006	KITCHEN REVISED
D	03.05.2006	BATH 2 REVISED, INTERNAL DOOR TYPES REVISED.
E	09.06.2006	ELECTRICAL REVISIONS
F	13.06.2006	ELECTRICAL REVISIONS, BATHROOM DUCT LEDGES REVISED
G	30.06.2006	SHOWER SEATS ADDED, BIC TO STUDY NOW BY OWNER, DOOR BELL & SOUNDER ADDED, HEATED TOWEL RAIL TO BATH 2, VANITY TO GUEST WC
H	06.07.2006	UNDERFLOOR HEATING ADDED
J	19.07.2006	MIRRORS ADDED, PLUG MOVED IN BED 2
K	04.09.2006	AC PIPING NOTES ADDED
L	20.11.2006	BATHROOMS INCREASED TO ACCOMMODATE MECHANICAL VENTILATION

architect
MARC HARRIES ARCHITECTS
UNIT 1 ROELAND SQUARE
ROELAND STREET
CAPE TOWN
TEL 021 465 2233 FAX 021 465 2220

drawing title
PALM SPRINGS
UNIT 905 - PART 2 OF 2
ELECTRICAL LAYOUT PLAN

project	scale	date	rev.
OASIS	1:50	29 APRIL 2005	L